

# NAMAGUNGA PRIMARY BOARDING SCHOOL

## P.7 REVISION WORK (SET 1) TERM 1 2020

### INTEGRATED SCIENCE

*Time allowed:*

*2 Hours 15 Minutes*

**Index No;**

--	--	--	--	--	--	--	--	--

**Candidate's Name:**.....

**Candidate's Signature:**.....

**School Name:**.....

**District:**.....

...

**FOR EXAMINERS'  
USE ONLY**

**Read the following instructions carefully.**

- 1. This paper has two sections A and B.**
- 2. Section A has 40 short questions (40 marks)**
- 3. Section B has 15 questions (60 marks)**
- 4. Answer ALL questions. All answers to both sections A and B must be written in spaces provided.**
- 5. All answers must be clearly written using blue or black ball point pen or ink. Only diagrams should be drawn in pencil.**
- 6. Unnecessary changes of work may lead to loss of**

**FOR EXAMINERS' USE  
ONLY**

<b>Qn. No.</b>	<b>MARKS</b>	<b>EXR'S NO.</b>
<b>1 – 10</b>		
<b>11 – 20</b>		
<b>21 – 30</b>		
<b>31 – 40</b>		
<b>41 – 43</b>		
<b>44 – 46</b>		
<b>47 – 49</b>		
<b>50 – 52</b>		
<b>53 - 55</b>		
<b>TOTAL</b>		

marks.

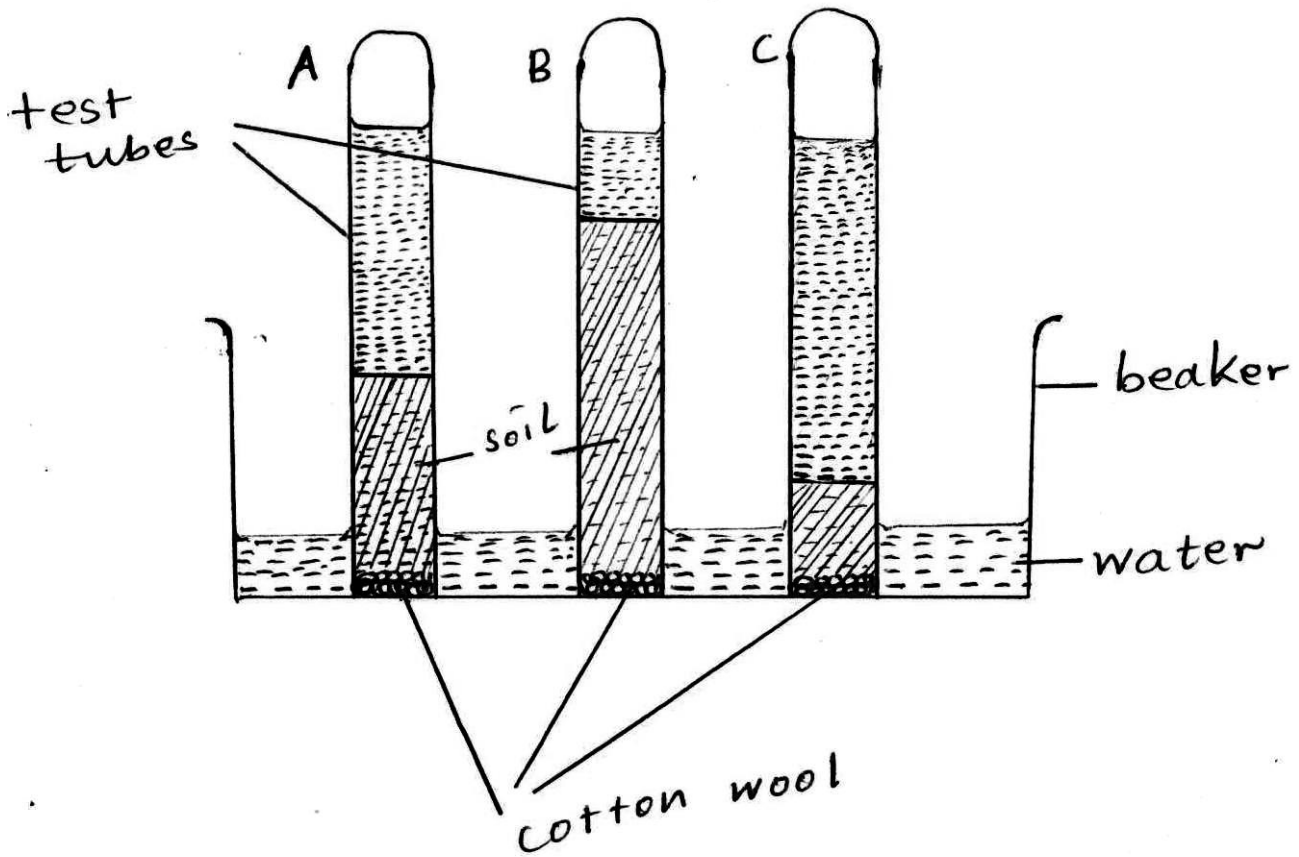
- 7. Do not fill in the boxes. They are for examiners' use only.

**SECTION A : 40 MARKS**

- 1. Which condition of the body is caused by severe vomiting?  
.....
- 2. Give one example of a local breed of sheep kept in Uganda.  
.....
- 3. Why should the elderly and babies be fed on mashed foods?  
.....
- 4. Why do some plants close their stomata during day and open them at night?  
.....
- 5. Write one disease of the lungs that can be transmitted through droplet infection.  
.....
- 6. Give a reason why health workers dress fresh wounds and cuts on the skin.  
.....
- 7. Give any one way in which farmers can improve yields of tuber crops.

.....

**The diagram below shows an experiment carried out about soil.**  
**Use it to answer questions 8 and 9.**



8. What is the experiment above testing about soil?

.....

9. State the importance of the cotton wool in the experiment above.

.....

10. State the function of the blood vessels within the human tooth.

.....

11. How does weeding control pests in the garden?  
.....
12. Mention the food deficiency disease caused by lack of calcium and phosphorus in someone's diet.  
.....
13. How are antibodies useful within the bodies of humans?  
.....
14. State one way of controlling mosquitoes around our homes without using insecticides.  
.....
15. Name the component of soil formed by weathering of rocks.  
.....
16. Why is displacement method used to find the volume of a stone?  
.....
17. How does regular dental flossing help to promote oral health?  
.....

**The diagram below shows a garden tool. Use it to answer questions 18 and 19.**



18. Name the garden tool drawn above.

.....

19. State the use of the garden tool above to crop farmers.

.....

20. Name the fungus used for making medicine.

.....

21. How is a sprain different from a strain?

.....

.....

22. Write one vector borne disease caused by protozoa to human beings.

.....

23. In which way does salting help to preserve some food stuffs?

.....

24. How can someone who has eaten poisonous food be made to vomit?

.....

25. Mention one advantage of food taboos to the environment.

.....

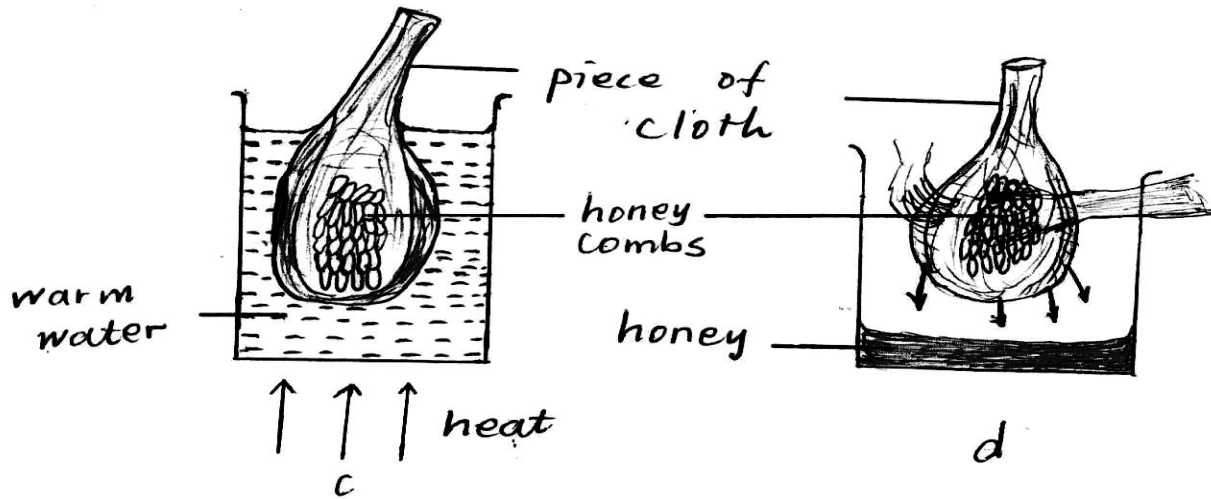
26. Mention one danger of using fresh mulches in the garden.

.....

27. Why are scale leaves on an onion important?

.....

**The diagram below shows a method of extracting honey from combs.**



28. Name the method of extracting honey shown in the diagram above.

.....

29. Give the importance of warm water in diagram C.

.....

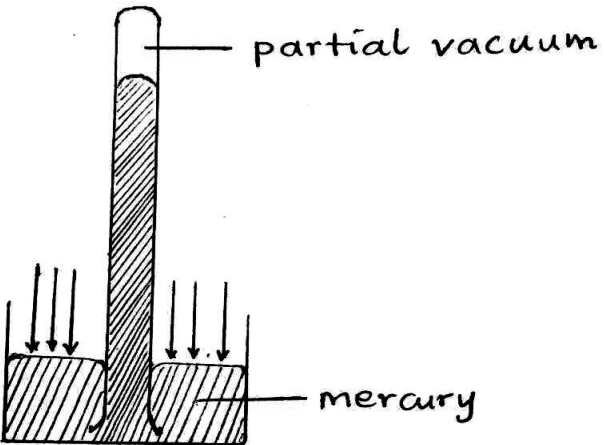
30. Which type of teeth are referred to as wisdom teeth?

.....

31. State any one sign and symptom of tuberculosis in human beings.

- .....
32. Which gas is produced during the process of decomposition of organic matter?  
 .....
33. State any characteristic of tuber crop pests.  
 .....
34. State any one way in which lice infestation can be controlled by people in our community.  
 .....
35. Write one energy resource got from water.  
 .....
36. State the importance of hanging green vegetables in a poultry house.  
 .....
37. How can a farmer who practices zero grazing avoid the spread of diseases among his goats?  
 .....

**The diagram below shows a weather instrument. Study and use it to answer questions 38 and 39.**



38. Name the weather instrument in the diagram above.

.....

39. How is the above weather instrument useful at a weather station?

.....

40. State one way in which the government promotes immunization programme.

.....

**SECTION B**

**(15 questions (60 marks)**

41. Mention the element of P.H.C promoted through;

(a) mothers attending antenatal care.

.....

(b) preparing a balanced diet for family members

.....

(c) clearing tall grass in the compound.

.....

(d) sensitizing community members about good health habits.

.....

42. (a) How are the plants given below commonly propagated;

(i) cassava? ..... (ii) carrots? .....

(b) State two advantages of vegetative propagation.

(i).....



(ii).....

43. (a) Mention two ways of removing impurities from water.

(i).....

(ii).....

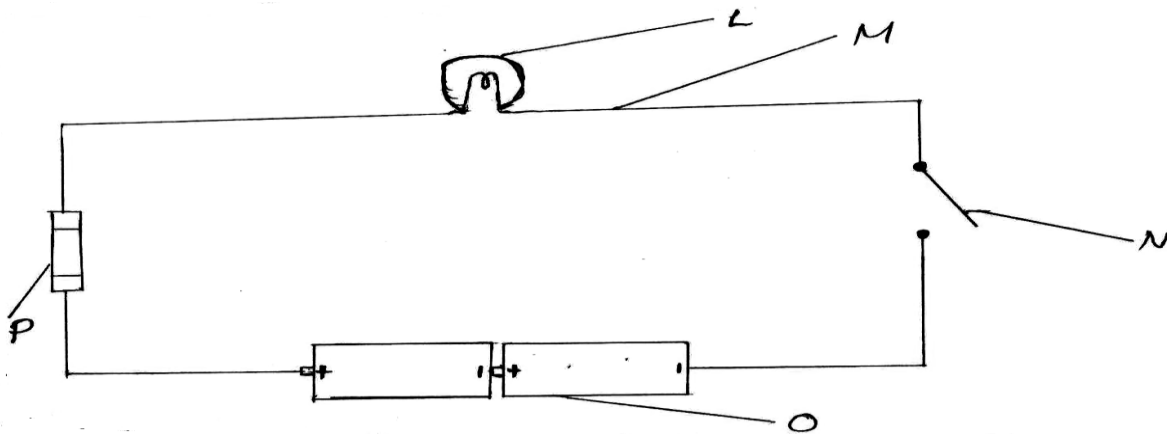
(b) How can water in which impurities have been removed be made safe for drinking ?

.....

(c) State one way of protecting safe water for drinking from contamination.

.....

44. **Study the electric circuit diagram below and use it to answer questions that follow.**



(a) Name the component of the circuit marked M.

.....

(b) State what happens to part L when part N is closed.

.....

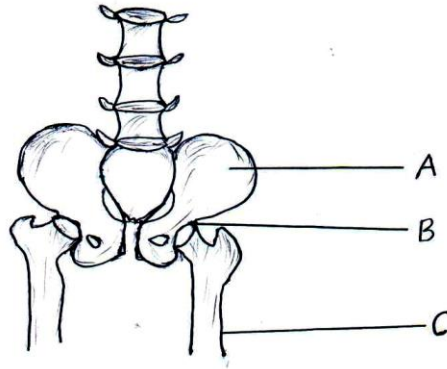
(c) Give a reason to support your answer in (b) above.

.....

(d) State one difference between the function of part N and P.

- .....
45. (a) State one way in which the reproduction of mammals and birds is:
- (i) similar .....
- (ii) different .....
- .....
- (b) How do mammals feed their young ones during the early months after birth?
- .....
- (c) How do birds protect their young ones from bad weather?
- .....
46. (a) Write two examples of tick borne diseases which attack cattle.
- (i).....
- (ii).....
- (b) Give any two ways of controlling tick borne diseases on a cattle farm.
- (i).....
- (ii).....
47. (a) State two uses of windmills.
- (i).....
- (ii).....
- (b) How does wind help to dry wet clothes?
- .....
- (c) Mention any one danger of wind in the environment.

.....  
48. **The diagram below shows part of the human skeleton. Use it to answer questions that follow.**



(a) Name the bones marked **A** and **C**.

(i) A.....(ii) C .....

(b) How is the movement of joint marked **B** different from that of the joint at the knee?

.....

(c) Mention one organ of the body protected by the bone marked **A**.

.....

49. (a) Mention two conditions which may cause a VIP latrine to smell.

.....

.....

(b) Write two diseases which can be controlled by proper use of latrines.

(i).....

(ii).....

50. (a) Mention two living things which are sources of light.

(i).....

(ii).....

(b) Why are people in different corners of a room with a lighting bulb able to receive light?

.....  
.....

(c) State what happens to light when it falls on a wall painted white?

.....

51. (a) Give any two excuses some people give for drinking alcohol.

(i).....

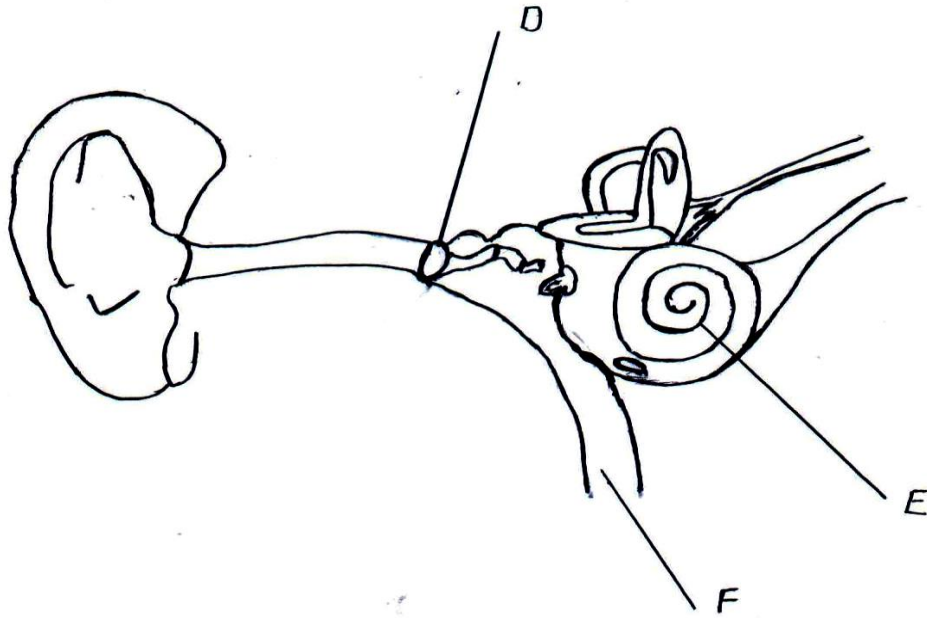
(ii).....

(b) Mention two dangers of excessive consumption of alcohol.

(i).....

(ii).....

52. **Use the diagram of the human ear below to answer questions that follow.**



(a) Name parts marked D and F

.....

(b) State the function of a part marked E in the hearing process.

.....

(c) Use letter G to show on the diagram the part used to balance the body in right posture.

.....

53. (a) Mention the class food which is first digested in the stomach.

.....

(b) State two ways in which hydrochloric acid is useful in the stomach.

(i).....

(ii).....

(c) Name the part of the alimentary canal which receives food from the stomach during digestion.

- .....
54. (a) How does heat travel through gases?  
.....
- (b) Mention two ways in which heat transfers by radiation is useful to people.
- (i).....
- (ii).....
- (c) State one danger of heat in the environment.  
.....
55. (a) How are the organs given below important in the working of the circulatory system?
- (i) **lungs** .....
- (ii) **kidney** .....
- (b) State two functions of blood in the human body.
- (i).....
- (ii).....